



LED UFO HIGHBAY



DESCRIPTION

Illuminate your workspace like never before with this LED UFO Style Industrial Highbay Light. This robust lighting solution combines aesthetics, energy efficiency, and exceptional performance to deliver a lighting experience that redefines industrial illumination.

CREE LED 2835	CRI 80	10kV SURGE PROTECTION	IK08
IP65	ALUMINIUM ALLOY POLYCARBONATE OPTICAL LENS	ADJUSTABLE BEAM ANGLE	

ELECTRICAL INFORMATION

Power Consumption	150W 200W
LED Type	LED 2835
Effective Luminous Flux (lm)	24 000 32 000
Efficacy (lm/W)	160
Correlated Color Temperature	5000K
Colour Rendering Index	Ra80
Beam Angle Options	60° 90°(Standard) 120°
UGR Level	28

*The tolerance for luminous flux is ±10%.

LIFESPAN & WARRANTY

Operating Temperature (°C)	-30 to +50
Lifespan of LED @Ta=25°C (hours)	L90B10 - 36 000 L80B10 - 73 000 L70B10 - 120 000
Warranty (years)	5

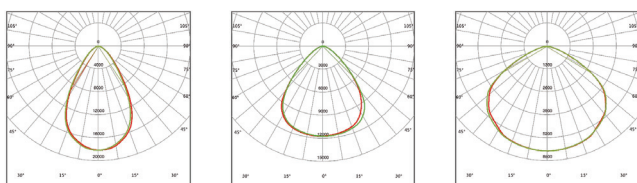
OPTIC INFORMATION

Driver Type	Constant Current (CC)
Input Voltage	220-240Vac, 50/60 Hz
Control	0-10V dimmable. Microwave motion sensor, PIR sensor
Power Factor	>0.92

MATERIALS & FINISH

- Aluminum Alloy
- Polycarbonate Optical Lens
- Black Powder Coating (RAL9017)

PHOTOMETRY 90° is standard. Also available in 60° and 120°.



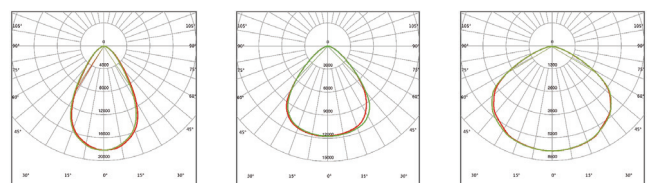
(60°)

(90°)

(120°)

150W

S/CAS-HB-150W-5K



(60°)

(90°)

(120°)

200W

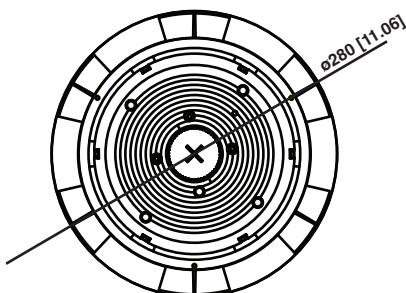
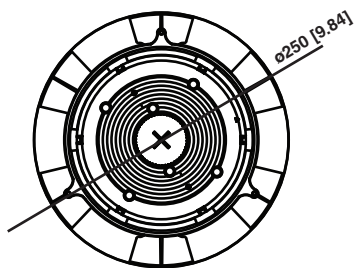
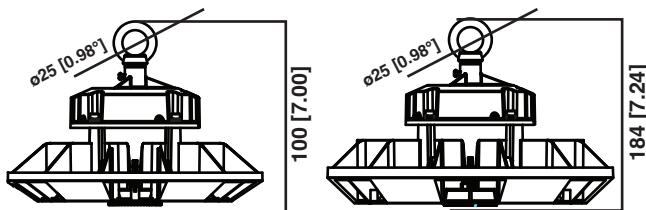
S/CAS-HB-200W-5K

KEY FEATURES

- 160 LPW - Lumen Per Watt
- Compact design for two sizes
- Full wattage: 150W, 200W
- Optimized heat sink structure
- High fins for excellent management of heat dissipation
- Intelligent control: Twist Microwave motion sensor and PIR sensor, 0-10V dimmable
- Multiple beam angles: 60°, 90°, 120°
- Two mounting options
- Internationally certified
- PC and ALU reflector are optional

DIMENSIONS

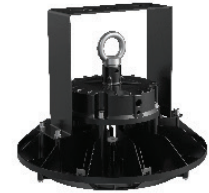
Product Dimensions (mm)	Ø250*180	Ø280*184
Luminaire Net Weight (kg)	1.7	2.2
Gross Weight (kg)	2.2	2.9



MOUNTING OPTIONS



Suspension Mount



Ceiling Mount

ACCESSORIES

- Mounting Bracket
- Microwave Sensor
- 60° Lens
- 120° Lens

APPLICATIONS

- Warehouses
- Chemical facilities
- Industrial facilities
- Shopping malls
- Stadiums
- Factories

CERTIFICATIONS



CE (Conformité Européenne)

Product meets EU safety, health and environmental protection requirements.



RoHS

Restriction of Hazardous Substances (RoHS)

Product conforms to strict standards of EU chemical compliance.



Certification Body (CB)

International approval of product safety test reports for electrical devices.



SAA Approvals

Product complies with the safety requirements of the applicable Australian standard.



C-Tick Certification

Australian EMC certification to protect the resources of the radio frequency band.

KEY FEATURES

- Microwave Sensor for max 15M Height
- With Zhaga Book 18 Receptacle
- 12 VDC input
- Bi-level Dimmable, Daylight Priority
- Remote Control

CERTIFICATIONS



CE (Conformité Européenne)

Product meets EU safety, health and environmental protection requirements



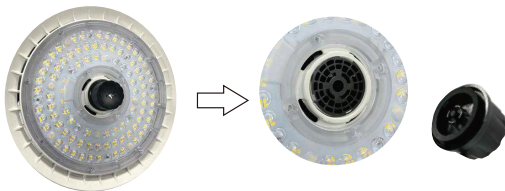
RoHS

Restriction of Hazardous Substances (RoHS)

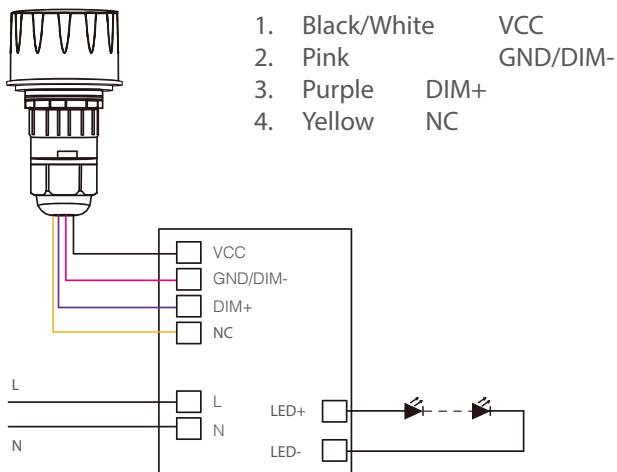
Product conforms to strict standards of EU chemical compliance

INSTALLATION

Inside the UFO



WIRING DIAGRAM

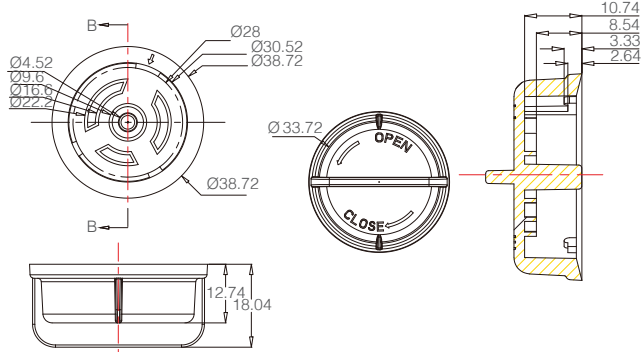


4 1 2 3

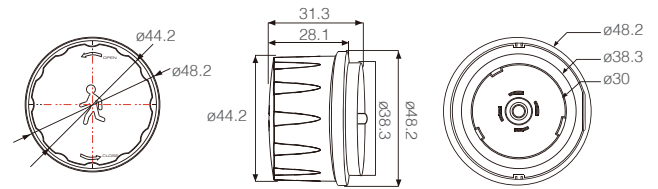


DIMENSIONS

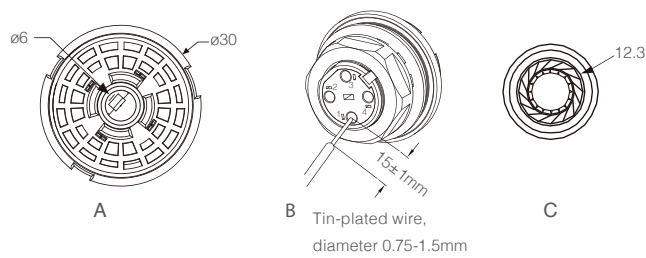
Cap



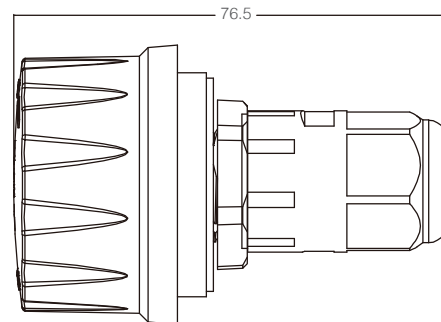
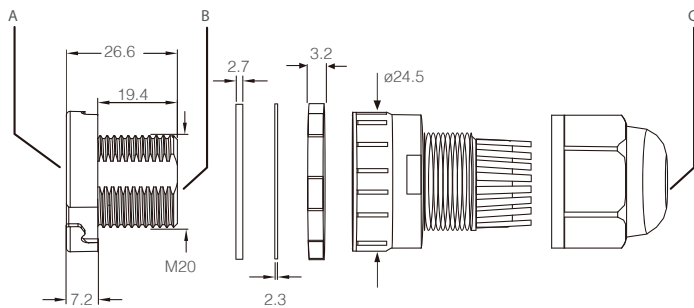
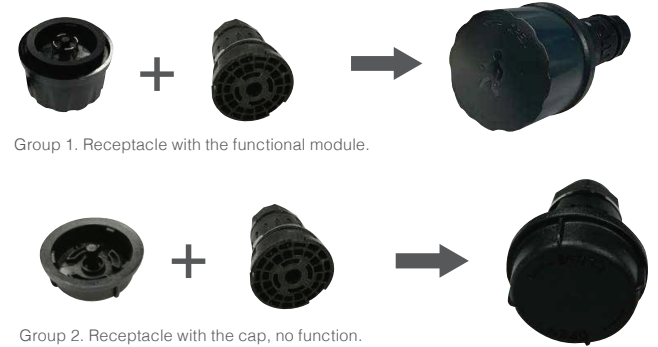
Module



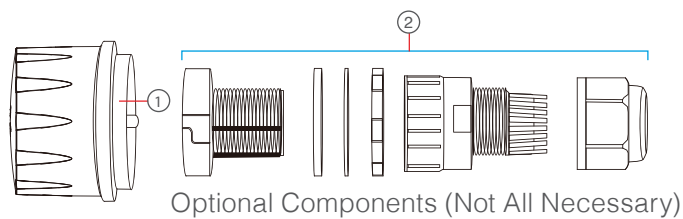
Receptacle



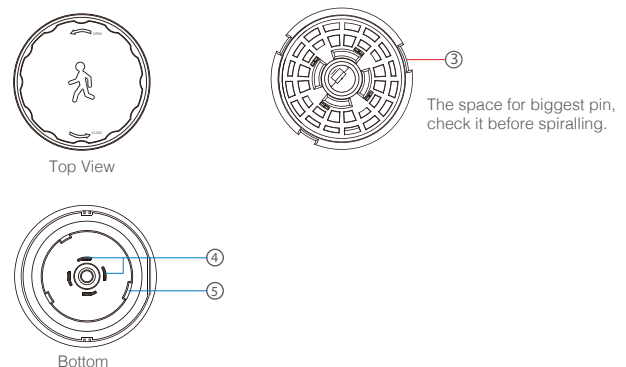
Components



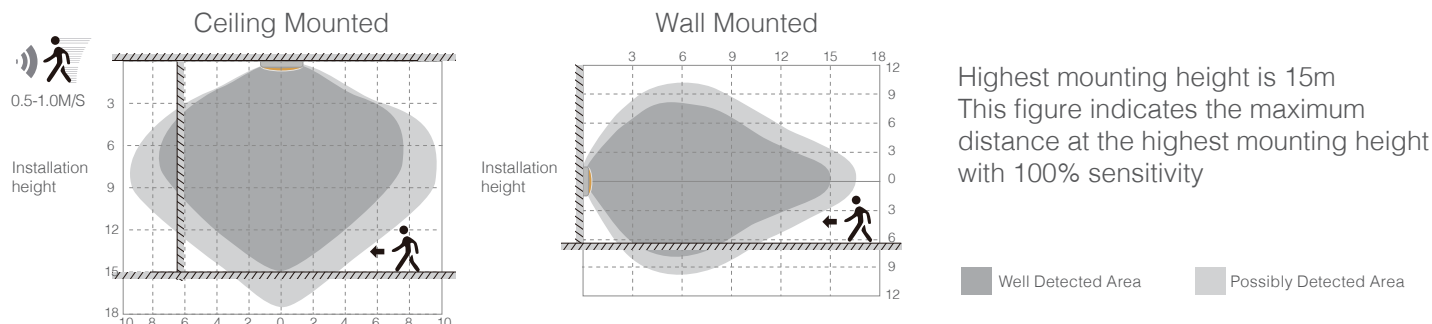
MECHANICAL STRUCTURE



- ① Sensor head
- ② Zhaga Receptacle Components
- ③ Zhaga Book 18 Receptacle
- ④ Metal Connection Pins(4pcs)
- ⑤ Mounting Port



DETECTION PATTERNS



PARAMETERS

Model NO.		CAS2025
FUNCTION PARAMETER	Frequency	5.8GHz±75MHz
	Microwave Power	<0.3mW
	Daylight Priority Function	Daylight threshold as 120Lux/80Lux/50Lux/30Lux, standby period as +∞ and standby dimming level as 10%/20%/30%
	Detection Area	25%/50%/75%/100%
	Daylight Threshold	2Lux/10Lux/30Lux/50Lux/80Lux/120Lux/Disable
	Standby Dimming Level	10%/20%/30%/50%
	Standby Period	0s/10s/30s/1min/5min/10min/30min/60min/+∞
	Holdtime	5s/30s/1min/3min/5min/10min/20min/30min
	Control	Standard Partner HD05R, the LCD screen display remote (purchase separately)
SENSOR INFORMATION	Dimming Play	Manually dim 10%~100% in ON/OFF mode, 60%~100% in sensor mode
	Installation Height	Max. 15m/49.21ft Ceiling Mounted
	Detection Distance	Max. ø16m/52.49ft Ceiling Mounted
	Detection Angle	30°-150° Without Glass Cover
INPUT	Warranty	5 Years
	Input Range	10.5-15V DC
OUTPUT	Current	<30mA
	Signal	DIM 0-10V
	Stand-by Power	<30mA Power Consumption
ENVIRONMENT	Connection	Zhaga Receptacle
	Storage Temp	-20°C~+60°C
CERTIFICATE & STANDARDS	Environmental Requirements	In accordance with CE ROHS
	IP Rating	IP65

PERFORMANCE

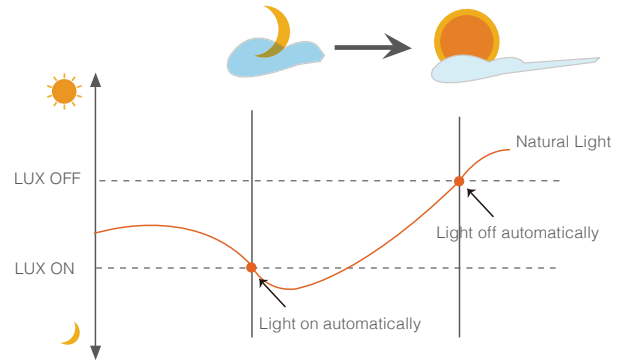
Dusk/Dawn sensor:

Dual-PD technology brings a fully automatic dusk/dawn sensor which can tell the difference between natural light and LED light, to ensure the light will be off when needed.

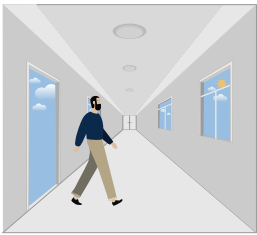
With Daylight priority function, CAS2025 is able to differentiate artificial light brightness from natural light after installed inside the fixture, and automatically turn off light when ambient brightness exceeds preset lux level.

Precondition of Daylight priority:

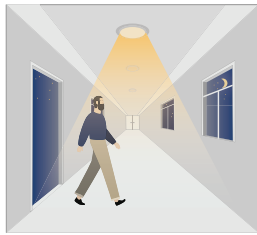
- Standby period is $+\infty$;
- Standby dimming level is on 10%, 20% or 30%;
- Daylight threshold is on 30Lux, 50Lux, 80Lux or 120Lux.



1. Automatically ON/OFF function



With sufficient daylight, even when motion detected, light remains OFF.



With insufficient daylight, the sensor turns light ON when motion gets detected.

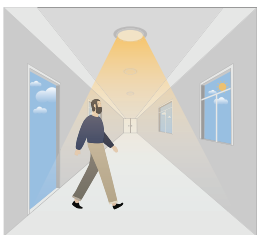


The sensor turns OFF light automatically after the holdtime when there's no motion detected.

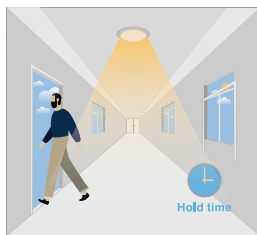
1. Automatically ON/OFF function

2. Daylight Disable

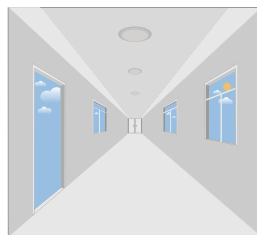
When daylight threshold is preset as "disable", the sensor turns the light ON when motion gets detected, and OFF after holdtime.



The sensor turns light ON when motion gets detected.

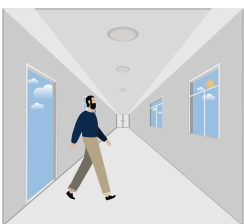


The sensor keeps light ON for holdtime period after motion leaves.

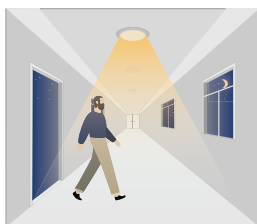


The sensor turns OFF light automatically after the holdtime.

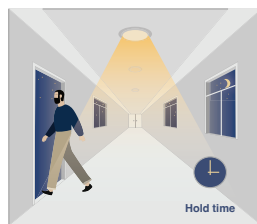
3. Corridor Function, Bi-level Dimmable



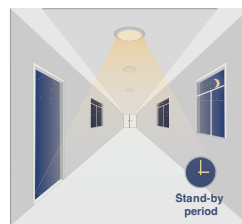
With insufficient daylight, the sensor turns light ON when motion gets detected.



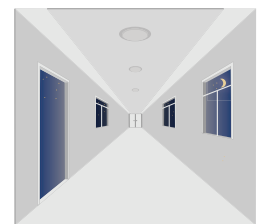
With insufficient daylight, the sensor turns light ON when motion gets detected.



After there's no motion detected, the sensor keeps light ON 100% for holdtime.



After holdtime, sensor dims light to standby dimming level for standby period.



The sensor turns OFF light automatically after the standby period when there's no motion detected.

ATTENTION!

1. The sensor should be installed by a qualified electrician and ensure power is OFF before installation.
2. Please read the instructions carefully before using the product and keep it for other users to read at any time.
3. We reserve the right to modify any incorrect text, image and technical parameters.
4. Any unauthorized modification is forbidden. Otherwise all guarantees will be immediately invalid.
5. Product could be optimized without prior notice

APPLICATION NOTES

1. Suitable for indoor application, half/completely outdoor environment conditions might be captured as moving signals to trigger the sensor.
2. Suitable for ceiling mount installation, adjust sensitivity properly if it's installed on side-wall because it gets more sensitive.
3. Adjust sensitivity properly when the sensor is applied in small/narrow/metal-built/with metal spaces.
4. Microwave sensor can't be placed under/inside metal shell; Microwave module must directly face the detection area with edge lower than light fixture
5. Keep the sensor away from vibration equipments, air-conditioning outlets, smoke extractors and alike conditions to avoid unwanted trigger.
6. Keep the sensor module away from AC input and DC output to avoid high/low frequency signal interference.
7. At least 2m/6.5ft distance between microwave sensors; 1.5m/4.9ft between the sensor and other wireless devices such as routers to avoid possible radio interference.
8. Daylight testing delivered in bright day without shadow or specially designed lampshade or lens.
9. Dimming performance differs when connected to different drivers; If the driver can't completely turn OFF, sensor can't either.
10. Input power voltage must be stable with float less than 10%.
11. The first time powered ON sensor, light will be ON 100% for about 10S then dims to standby level or OFF.
12. Distance detection is delivered by testing person about 165cm in open area as reference, the result differs by size and speed of moving objects, mounting height and real-life situation.